

## Chroma Lightmeter Plus ST522

### Applications

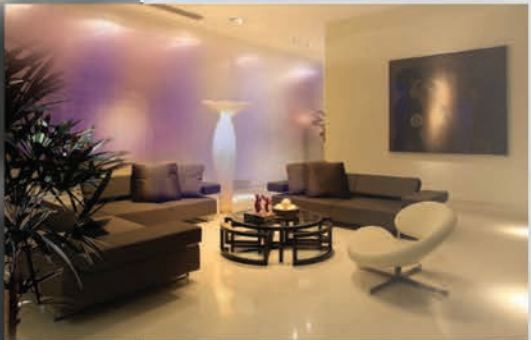
- Color LED Lighting
- Commercial Displays
- Film and Television
- Projection Halls
- Art Galleries
- Museums
- Theatres
- Arenas
- Stadiums



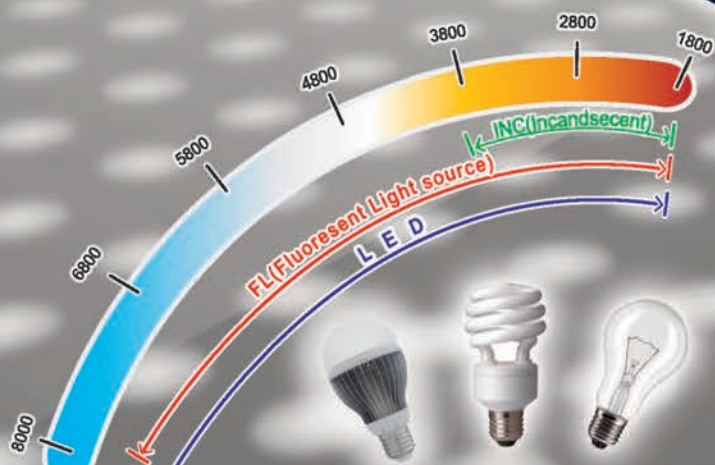
• Greenhouse lighting



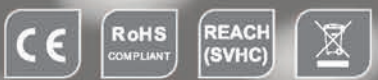
• Street lighting



• Interior room lighting



Multi-Light Sources



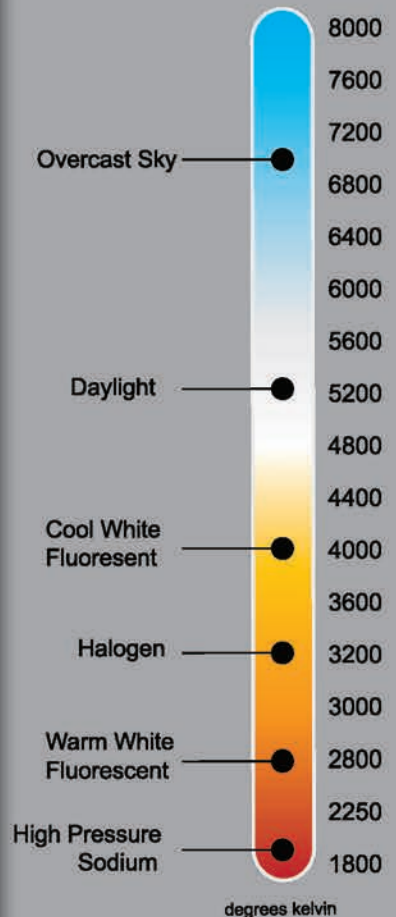
## Features

- Multi-light sources measurement of light illuminance.
- Multi-light sources selection function.
- Meets CIE Photopic spectral response.
- Data Hold function.
- Fast responding.



## SPECIFICATIONS

Model name	ST522
Sensor Element	SPC(Silicon Photocell)
Measuring Function	Illuminance : Ev (lx or fcd) Color Coordinate : (x, y), (u', v') (CIE 1960) Correlated Color Temperature : CT, Δuv Color Difference : (ΔEv, Δx, Δy), (ΔEv, Δu', Δv'), (ΔEv, ΔCT, Δu'v'), (One set of reference color)
Measuring Range	Ev : 0~80000 lx(0~7432 fcd) CT : 99990 K Max.
Accuracy (at 25 °C, 60% RH)	Ev : ± (3%+2 Digital) (3000 lx, standard illuminant A measured) x, y : ± 0.02 (100 lx, RGB LED Light)
Resolution	Ev : 1(0~9999), 10(Over 10000), lx ; 0.1(0.0~999.9), 1(Over 1000), fcd ; CT : 1(0~9999), 10(Over 10000), K ; x, y : 0.001 ; u', v' : 0.001
Response Time	Approx. 1 sec.
Repeatability	x, y : ±0.003 (100 lx, RGB LED Light)
Temperature Drift	Ev : ± (5%+2 Digital) (3000 lx, standard illuminant A measured) x, y : ± 0.008 (100 lx, RGB LED Light)
Humidity Drift	Ev : ± (3%+2 Digital) (3000 lx, standard illuminant A measured) x, y : ± 0.005 (100 lx, RGB LED Light)
Operation Temperature	32 °F to 122 °F (0 °C to 50 °C), Less than 80% RH
Store Temperature	14 °F to 140 °F (-10 °C to 60 °C), Less than 85% RH
Battery life	70 hours or longer continuous use
Measuring Light Sources	FL (Fluorescent), INC (Incandescent), LED
Multi-Display	Triple readings
Over range indication	Yes ( " -HI- " )
Data Hold	Yes
Low battery indication	Yes
Auto Power Off	10 Minutes of idle
Weight	6.3 oz. (179g) without battery
Dimensions	Main Instrument : 5.5 x 1.9 x 1.1 inch (140 x 49 x 29 mm) Sensor Probe : 6.5 x 2.0 x 1.4 inch (165 x 50 x 36 mm)
Accessories	9V Battery x1, Instruction manual x1, Carrying case x1



SALE AGENT

**SENTRY®**  
SENTRY OPTRONICS CORP.

3F, No. 122, Sec. 1, Sanmin Road,  
Ban-Ciao Dist., New Taipei City 220, Taiwan, R.O.C  
TEL: 886-2-29568198 FAX: 886-2-29567662  
<http://www.sentrytek.com.tw>  
E-mail: [dlin@sentrytek.com.tw](mailto:dlin@sentrytek.com.tw)  
[sales2@sentrytek.com.tw](mailto:sales2@sentrytek.com.tw)